



Mallorcaresidencia®  
More than a real estate agency



Ref.:92350

### Penthouse with private terrace and views of Palma

This penthouse is located in the Blanquerna area, a stone's throw from La Rambla and Palma city centre. Here you will find restaurants and cafés lined up along the well-known pedestrian street, as well as shops and pharmacies. The area is very family-friendly with playgrounds and a strong sense of community, creating a cosy atmosphere with a great variety of cultures and nationalities.

The renovated penthouse has a living space of 72 sqm, divided into two bedrooms, a large bathroom, a lovely living room and an open kitchen with pantry and laundry room. The apartment also has a terrace of 20 sqm, perfect for enjoying the sun and panoramic views of Palma city.

Additional information: air conditioning, central heating, lift, private terrace, furnished

|                |         |     |
|----------------|---------|-----|
| Blanquerna     | no      | no  |
| 2              | 1       | no  |
| 72 m2 +  20 m2 | 450.000 | yes |

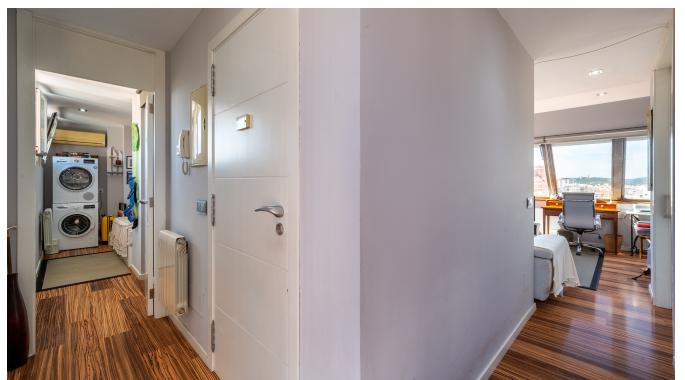




Mallorcaresidencia®  
More than a real estate agency

Ref.: 92350

Penthouse with private terrace and views of Palma



[www.mallorcaresidencia.com](http://www.mallorcaresidencia.com)

Calle Aníbal 23D bajos - Santa Catalina - 07013 Palma - Tel: +34 971 22 08 68 - [info@mallorcaresidencia.com](mailto:info@mallorcaresidencia.com)