



Mallorcaresidencia®
More than a real estate agency



Ref.:MF1919

Spectacular apartment in Bonanova with panoramic views over Palmas bay and Cathedral

Spectacular apartment in exclusive Bonanova with panoramic views of Palmas harbor and the cathedral, several facilities such as pool, garden, garage and storage room. The spacious residence currently consists of two double bedrooms both with en-suite bathroom. Originally there were four bedrooms, but two of these have been removed for a more open plan solution. In addition to the two bathrooms there is a guest toilet. A bright living room with a cozy fireplace, dining area with access to the terrace and a spacious separate kitchen equipped with white goods. Apart from the incredible views, the large spaces and the amazing qualities, the apartment also has two parking spaces, a 6 m2 storage room, communal pool and a communal garden.

Sea views from all the rooms and the east side have a fantastic panoramic view of Palma, the cathedral and the impressive Castell Bellver. The residence has a very quiet location and two spacious terraces, one with morning sun and the other with evening sun. This must be experienced - as it is as beautiful in the day as in the evening! This is definitely a place to call home!

Additional information: air conditioning, central heating, double glazed windows, marble floor, fireplace, storage room in the basement, communal pool and garden and 2 parking spaces.



Bonanova



yes



yes



2



2



yes



120 m2 + 34 m2



875.000



yes

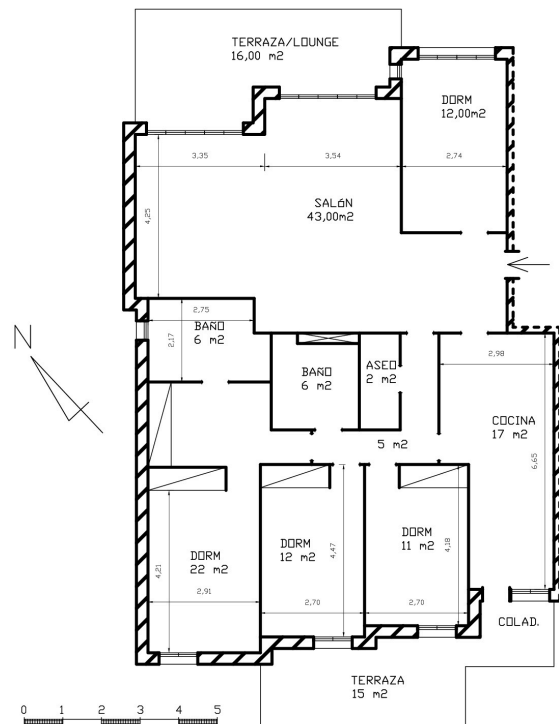


www.mallorcaresidencia.com

Calle Aníbal 23D bajos - Santa Catalina - 07013 Palma - Tel: +34 971 22 08 68 - info@mallorcaresidencia.com

Ref.: MF1919

Spectacular apartment in Bonanova with panoramic views over Palmas bay and Cathedral



APARTAMENTO BONANOVA
Total Sup. Habitable = 136 m²
Terraza cubierta/Lounge = 16 m²
Terraza descubierta = 15 m²



Mallorcareidencia®
More than a real estate agency

