



Mallorcaresidencia®
More than a real estate agency



Ref.:MF2094

Newly built penthouse with large roof terrace in El Molinar

We are glad to present this newly built penthouse located in the sough after area of Portixol / El Molinar, the former fishing village that has become one of Palma's most trendy areas. Its proximity to the city centre, the beach and the airport makes it a prime location and an ideal place to live. The apartment was part of a project, that has now been finished, that consists of two buildings and a total of 7 apartments with a community swimming pool.

The penthouse has a living area of 110 m2 and consists of 2 bedrooms, 2 bathrooms, a modern fully equipped design kitchen and a living room. There is also a nice roof terrace of approximately 72 m2 with a small pool. The apartment has been made of only high quality materials and have features such as hot / cold AC installation, floor heating, double glazing, stone and/or wooden floors. A parking and a storage space are included in the price.

Additional information: Air conditioning, heating, doubleglazing, fire place, parking space, 2 community pools and private terraces.



Portixol - El Molinar



no



yes



2



2



yes



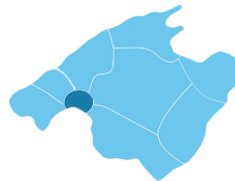
110 m2 + 72 m2



1.150.000



no

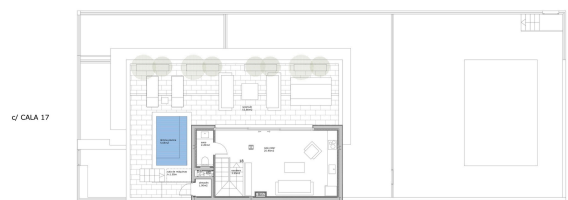




Mallorcaresidencia®
More than a real estate agency

Ref.: MF2094

Newly built penthouse with large roof terrace in El Molinar



www.mallorcaresidencia.com

Calle Aníbal 23D bajos - Santa Catalina - 07013 Palma - Tel: +34 971 22 08 68 - info@mallorcaresidencia.com