



Ref.:MF2519

Wonderful penthouse in El Terreno

Beautiful penthouse with nice layout in an excellent location in el Terreno, close to the Bellver park and the Paseo Marítimo. Right on the border with Son Armadams, we find this gem with two large bedrooms and two bathrooms, one of which is en-suite. The entire home is in very good condition and has been used very sparingly since it was renovated in 2017.

From the entrance you enter a welcoming hall that leads straight ahead into the combined living room and dining room. There are large windows with wonderful light and access to the large terrace of approximately 24 m2.

To the right of the hall is the bright kitchen with kitchen appliances in good condition and efficiently used work space. Next to the kitchen is a large bedroom with room for a double bed and built-in wardrobes. Right next door is a fully equipped bathroom complete with bath tub, shower and heated towel rail.

Another large bedroom with a smaller en-suite bathroom is adjacent to a small office/living room with access to another terrace that has sun pretty much all day. Adjacent to the terrace we find the spacious laundry room with plenty of space for storage.

This is a home for a demanding buyer. The entire apartment has an air of stylish elegance and quality.

Additional information: A/C hot and cold, lift, double glazed windows



El Terreno



no



no



2



2



no



Mallorcaresidencia®
More than a real estate agency



100 m2 + 30 m2



649.000



yes

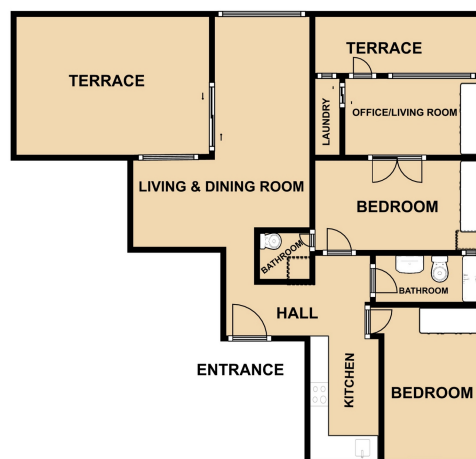




Mallorcaresidencia®
More than a real estate agency

Ref.: MF2519

Wonderful penthouse in El Terreno





Mallorcaresidencia®
More than a real estate agency



www.mallorcaresidencia.com

Calle Aníbal 23D bajos - Santa Catalina - 07013 Palma - Tel: +34 971 22 08 68 - info@mallorcaresidencia.com