



**Mallorcaresidencia®**  
*More than a real estate agency*



**Ref.:MF2748**

### **Charming townhouse with a view in Esporles**

This lovely townhouse is located in the charming mountain village of Esporles, at the foot of the Serra de Tramuntana. Surrounded by stunning natural scenery, Esporles offers you the peace and quiet you need, with all the convenience of a lively village. Palma city can be reached in just 25 minutes, as well as other essential amenities such as hospitals and international schools.

The townhouse, built in classic Mallorcan style, spans two floors with a living area of approximately 190 m. The ground floor features a spacious living and dining room with a cozy fireplace and direct access to a lovely patio, a generous kitchen, and a double bedroom with en-suite bathroom. Upstairs, you'll find an additional living room, two double bedrooms, and a large bathroom with a bathtub. All bedrooms open onto a large terrace that connects to the tiered garden, offering panoramic views of the beautiful mountain range and the charming village.

The house has large windows facing west allowing for plenty of natural light throughout the day.

Additional information: AC, heating through radiators, fireplace.



Esporles



1049 m2



no



3



2



no



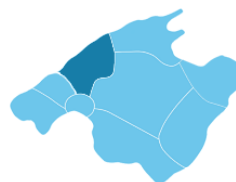
190 m2 + 20 m2



890.000



no



[www.mallorcaresidencia.com](http://www.mallorcaresidencia.com)

Calle Aníbal 23D bajos - Santa Catalina - 07013 Palma - Tel: +34 971 22 08 68 - [info@mallorcaresidencia.com](mailto:info@mallorcaresidencia.com)

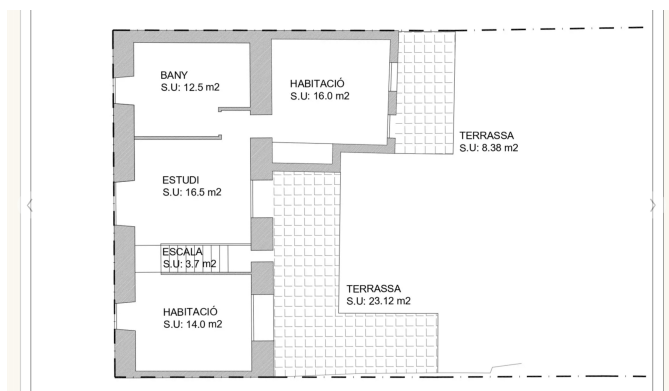




**Mallorcarendencia®**  
*More than a real estate agency*

**Ref.: MF2748**

**Charming townhouse with a view in Esporles**







Mallorcaresidencia®  
*More than a real estate agency*

