



**Mallorcaresidencia®**  
*More than a real estate agency*



**Ref.:MFP127**

### **Stylish architecture project in Santa Catalina**

This beautiful and exclusive project is now finished. It has state-of-the-art architecture and is in a unique location, between the neighborhoods of Santa Catalina and Son Espanyolet, the liveliest areas of Palma. Bustling streets filled of boutiques and restaurants. Innovating and cutting-edge studios, showrooms, and pop-up stores. It's ideal for those who want to live close to the sea and to the city. This project consists of a thoughtful design combined with elegance that is within the reach of few. This is the place to enjoy the Mediterranean lifestyle.

A German developer is behind the project which combines Mediterranean interior living with functional design and a high German quality standard. There will be 25 apartments 3 of which are luxury penthouses, with two large private sun-drenched terraces. Here you will find privacy despite that you are in a residential complex. Furthermore, the complex will have two impressive common areas that provide both health and serenity with different surroundings. A pool with sun bathing solarium, and garden area with Mediterranean features and trees, all to offer you leisure and tranquility. But also, energy and vitality in the bright community fitness and gym area that has windows looking onto the pool. This is comfort embodied in luxurious residential services! From the spacious entrance hall, you can access to your home in one of its two elevators or approach the large parking lot that is on two levels, with spaces for bicycles and storage (to be purchased separately). Because design is luxury and practicality.

The apartments have a detailed design with magnificent qualities and noble materials to offer you comfort, pleasure and wellness. All flats have a compact and open-plan space with optimized layouts. Large windows to enjoy natural light and the Mediterranean breeze in three different, carefully chosen finishes. An intimate and personal space especially when you can choose and create your dream home. The unique construction offers a variety of alternatives that project your personality. Here you be given the choice to customize your dream home with three personalized design service according to your taste and needs: Insula Light, Shine, and Glam Style. Inspiration and creativity seen in top quality materials and shapes. This is the perfect investment.

The building offer a privileged setting overlooking the harbour combined with high standard of living with lots of charm and peaceful corners where you can feel the Mediterranean Sea breeze. Santa Catalina offers everything your heart desires. A place not only to live in, but also to enjoy, it's the ideal locations in which to build dreams. Because the perfect spot deserves unique, sustainable and timeless projects, where design elevates the living experience to a lifestyle and a place to enjoy a Mediterranean lifestyle.

[www.mallorcaresidencia.com](http://www.mallorcaresidencia.com)

Calle Aníbal 23D bajos - Santa Catalina - 07013 Palma - Tel: +34 971 22 08 68 - [info@mallorcaresidencia.com](mailto:info@mallorcaresidencia.com)



Mallorcaresidencia®  
*More than a real estate agency*

For more information about the 1 bedroom apartments MFP127A, [click here](#)

For more information about the 2 bedroom apartment MFP127B, [click here](#)

For more information about the luxury penthouse with private rooftop terrace MFP127C, [click here](#)



Santa Catalina - Tennis



no



yes



1



1



yes



47 m2 +  4 m2



499.000



yes





**Mallorcaresidencia®**  
*More than a real estate agency*

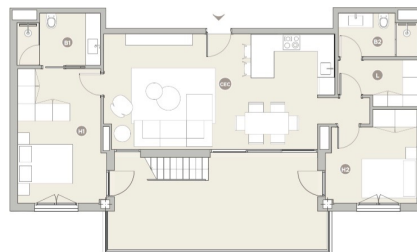
**Ref.: MFP127**

**Stylish architecture project in Santa Catalina**





**Mallorcareidencia®**  
More than a real estate agency



VISTA PLANTA 1	VIVIENDA 24				VISTA ALZADO	ESCALA Y ORIENTACIÓN
	Sup. Construida + terraza		103,66 m <sup>2</sup>	Sup. Com. + comuni	234,30 m <sup>2</sup>	
B1	Baño 1	5,06 m <sup>2</sup>	H2	Habitación 2	8,85 m <sup>2</sup>	
B2	Baño 2	5,99 m <sup>2</sup>	L	Lavandería	3,09 m <sup>2</sup>	
C/C	Cocina-Entrada-Corredor	30,80 m <sup>2</sup>				
H1	Habitación 1	13,54 m <sup>2</sup>				

El presente documento es preliminar y puede estar sujeto a modificaciones derivadas del proyecto de edificación del presente estado. El propietario se compromete a mantenerlo informado.