



Mallorcaresidencia®
More than a real estate agency



Ref.:MFP140A

Newly built ground floor apartment with 2 bedrooms and terrace in El Terreno

This newly built ground floor apartment is located in the increasingly popular area of El Terreno. The apartment has an excellent location with the port and Paseo Marítimo less than a 5 minute walk away. It is also a short walk to the beautiful park of Bellver forest. The popular Santa Catalina is a stone's throw away and the center of Palma is also very close.

The building consists of a total of 8 apartments on two floors. This ground floor apartment has its own entrance from the street and has a living area of 72 m² plus 10 m² terrace. It has 2 bedrooms and 2 bathrooms, one of which is en-suite. The living room and kitchen have an open floor plan concept. From the master bedroom there is direct access to the terrace. Great care has been taken to create a comfortable and lively interior with a very high standard of design and materials. There are large windows, wooden floors and built-in air conditioning throughout the apartment and underfloor heating in the bathrooms.

Additional Information: Elevator, air conditioning, underfloor heating, terrace and storage room in the garage.



El Terreno



no



no



2



2



no



72 m² + 10 m²



395.000



yes



www.mallorcaresidencia.com

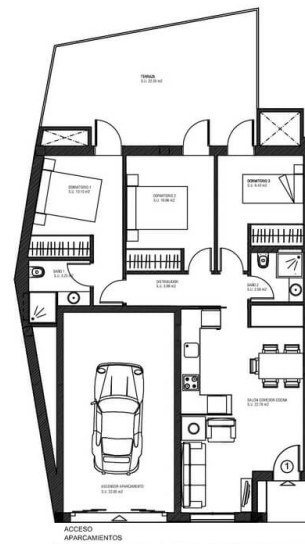
Calle Aníbal 23D bajos - Santa Catalina - 07013 Palma - Tel: +34 971 22 08 68 - info@mallorcaresidencia.com

Ref.: MFP140A

Newly built ground floor apartment with 2 bedrooms and terrace in El Terreno



PLANTA BAJA		
CUADRO SUPERFICIES CONSTRUIDAS		
VIVIENDA 1	PL. BAJA - 1ª	70,34 m ²
	TERRAZA	22,35 m ²





Mallorcaresidencia®
More than a real estate agency

