



Mallorcaresidencia®
More than a real estate agency













Ref.:MF1824

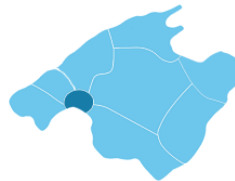
Unique refurbished Townhouse with terraces and sea view in Es Jonquet

This unique townhouse is located in Es Jonquet, a picturesque area of Palma that has been declared a cultural heritage, famous for its windmills and old fishermen houses. It is a quiet part of the trendy and popular area of Santa Catalina. The townhouse has three floors: The ground floor with a large and beautiful patio, the first floor with plenty of space and a lovely kitchen terrace and the top floor with a fantastic terrace overlooking the Cathedral and the port of Palma. The current owners have chosen to keep the property divided into two separate and fully equipped apartments, suitable for larger families that prefer some privacy. The two apartments can easily be transformed into one fantastic townhouse in three levels. Today the distribution is as follows:

Ground floor apartment of aprox 80 m2, with two bedrooms and a spacious living/dining area that opens up to a large private patio of 50 m2, via a folding glass wall. First floor apartment of 100 m2, divided in two levels with three bedrooms, bathrooms and terraces facing south and north. Both apartments have recently been refurbished using high quality materials, preserving original details and the original charm of the property.

Additional information: Air conditioning, heating, fireplace.

	Santa Catalina - Tennis		0 m2		no
	5		3		no
	180 m2 +  114 m2		1.390.000		no



www.mallorcaresidencia.com

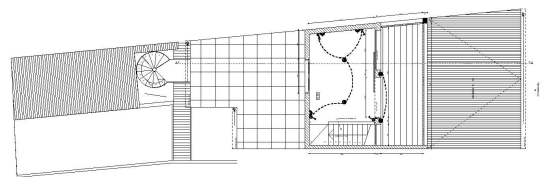
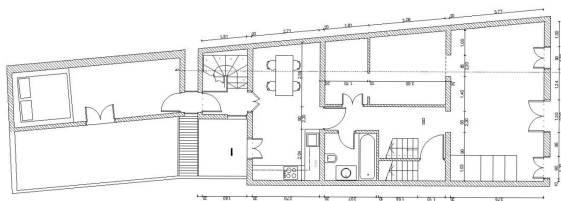
Calle Aníbal 23D bajos - Santa Catalina - 07013 Palma - Tel: +34 971 22 08 68 - info@mallorcaresidencia.com



Mallorcaresidencia®
More than a real estate agency

Ref.: MF1824

Unique refurbished Townhouse with terraces and sea view in Es Jonquet





Mallorcaresidencia®
More than a real estate agency

