



Mallorcaresidencia®
More than a real estate agency



Ref.:MF1849

Bright penthouse with two large terraces in Son Espanyolet

This is a well-kept penthouse with large terraces and very nice views to Castillo Bellver. This bright apartment is distributed in 2 bedrooms, 1 bathroom, 1 guest toilet, fully equipped kitchen and living area. All the rooms have large windows, some with sliding glass doors, which allow a lot of day light.

From the living room you have direct access to the 66m² big terrace that is situated on the same level as the apartment. In addition, there is a big, private, roof terrace which you reach via the main stair case. An invitation to enjoy outside living and beautiful views not far at all from Palma centre. Son Espanyolet is a very nice area, within walking distance to the nice green areas of the Bellver Parc, as to Santa Catalina and the port.

Additional information: , air conditioning, double glazing, lift, parking, spacious terraces.



Son Espanyolet



no



no



2



2



yes



81 m² + 130 m²



365.000



yes

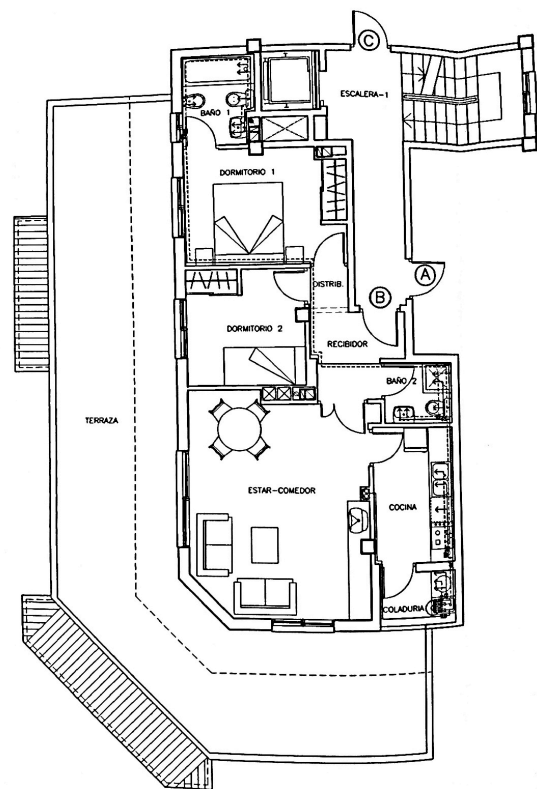




Mallorcaresidencia®
More than a real estate agency

Ref.: MF1849

Bright penthouse with two large terraces in Son Espanyol





Mallorcaresidencia®
More than a real estate agency

