



Mallorcaresidencia®  
More than a real estate agency



Ref.:MF1872

### Spacious flat with large terraces just around the corner from Jaime III

This large apartment is found in a representative building with nice entrance and two elevators. The location is perfect for those who are looking for a spacious city flat - close to everything and just on the border between Santa Catalina and the shopping area around the street Jaime III.

The apartment is suitable for the big family or those looking for large spaces. The 200 m2 living area consists of 5 bedrooms and 3 bathrooms. Or it could be transformed into an amazing master bedroom with a large walk in closet and a luxurious en suite bathroom. The Apartment also provides a panoramic view of Palma city centre, the mountains and the Mediterranean Sea. The two terraces have plenty of room for a dining table and a barbecue area, one of the terraces overlooks the sea while you can enjoy mountain views from the other one. The residence is in need of some updating and can then be transformed into a spacious, bright and luxurious dream home in the heart of Palma.

Further information: air conditioning, garage, private terraces and elevator.



Santa Catalina - Tennis



yes



no



5



3



yes



200 m2 + 30 m2



895.000



yes



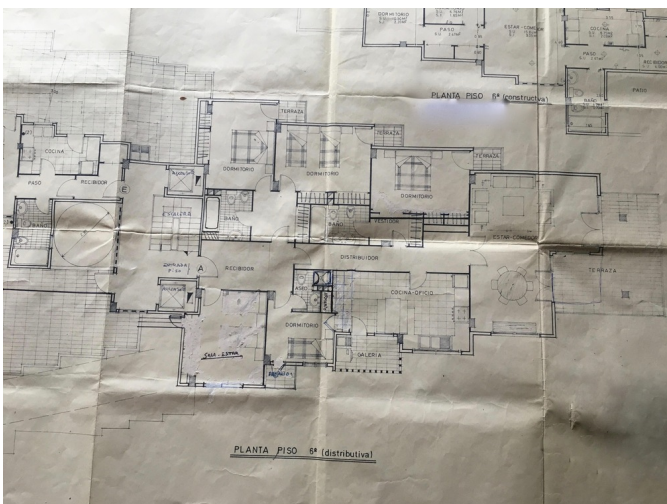




**Mallorcaresidencia®**  
*More than a real estate agency*

**Ref.: MF1872**

**Spacious flat with large terraces just around the corner from Jaime III**





Mallorcaresidencia®  
*More than a real estate agency*

