



Mallorcaresidencia®
More than a real estate agency



Ref.:MF2512

Spacious penthouse to refurbish in the center of Palma

This spacious penthouse from the 1970s is located in the area of Camp d'en Serralta, a convenient area with easy access to various amenities such as supermarkets, cafes, restaurants and just a 7 min walk to the old town. Situated on the 6th floor you can enjoy a fantastic view over the local square and the rooftops of Palma center.

When you enter the 135 m2 apartment, you'll find a spacious hallway. To the right, you'll see the glass panel double doors which lead you into the living room. Straight ahead, there is a bedroom and to the left of the hallway, you'll find a corridor that leads to the kitchen and the four remaining bedrooms and two bathrooms, one of them en suite. The amazing 82 m2 terrace runs along the whole southwest side of the flat which ensures sun and light throughout the whole day.

Overall, the layout of the apartment offers a lot of possibilities to play with the space provided indoor as well as outdoor. It is an excellent opportunity for someone who is looking for a unique project to create a modern and comfortable living environment in the center of the Palma.

Additional information: parking, terrace on the same level, refurbishment opportunity.



El Camp d'en Serralta



no



no



5



2



yes



135 m2 + 82 m2



650.000



yes



www.mallorcaresidencia.com

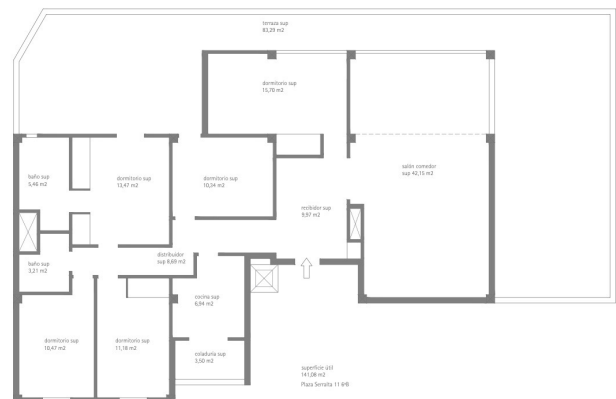
Calle Aníbal 23D bajos - Santa Catalina - 07013 Palma - Tel: +34 971 22 08 68 - info@mallorcaresidencia.com



Mallorcaresidencia®
More than a real estate agency

Ref.: MF2512

Spacious penthouse to refurbish in the center of Palma



www.mallorcaresidencia.com

Calle Aníbal 23D bajos - Santa Catalina - 07013 Palma - Tel: +34 971 22 08 68 - info@mallorcaresidencia.com



Mallorcaresidencia®
More than a real estate agency

