



Ref.:MFP140

New project of modern apartments with terrace in El Terreno

We find this new residential project of 8 apartments is in the increasingly sought-after and popular area, El Terreno in the western part of Palma. The apartments have an excellent location with the port and Paseo Marítimo in less than 5 minutes walking distance. It is a short walk to the beautiful park of Bellver forest. Popular Santa Catalina is a stone's throw away and Palma city center is also within walking distance.

The project will consist of 8 apartments divided into two floors where all homes have a parking space and a storage room in the garage. There will be 4 ground floor apartments with 2 and 3 bedrooms, where three of these have private terraces and four penthouses with 2 or 3 bedrooms with large private roof terraces. The property will have an elevator. The project is underway and is expected to be completed during the summer of 2023. Great emphasis will be placed on creating a cozy and vivid interior with a very high standard in both design and material. Scandinavian design with a focus on clean, simple lines, minimalism and functionality without sacrificing aesthetics. Large windows, wooden floors and built-in A / C throughout the apartment. Open kitchen-living room, an 'open-space concept' and bathrooms with underfloor heating.



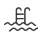







Additional information: Elevator, air conditioning, underfloor heating, terrace, parking space and storage in garage.

For more information about the ground floor apartment with 2 bedrooms and terrace, please see [MFP140A](#)

For more information about the ground floor apartment with 3 bedrooms and terrace, please see [MFP140B](#)

For more information about the penthouse with 2 bedrooms with and large terrace, please see [MFP140C](#)

For more information about the penthouse with 3 bedrooms and large terrace, please see [MFP140D](#)

	El Terreno		yes		no
	0		0		yes
	0 m2 +  0 m2		395.000		yes



www.mallorcaresidencia.com

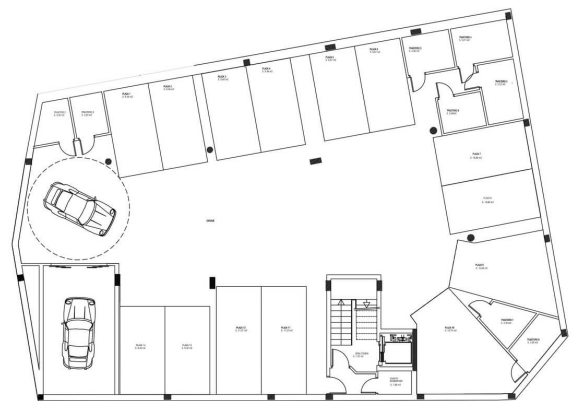
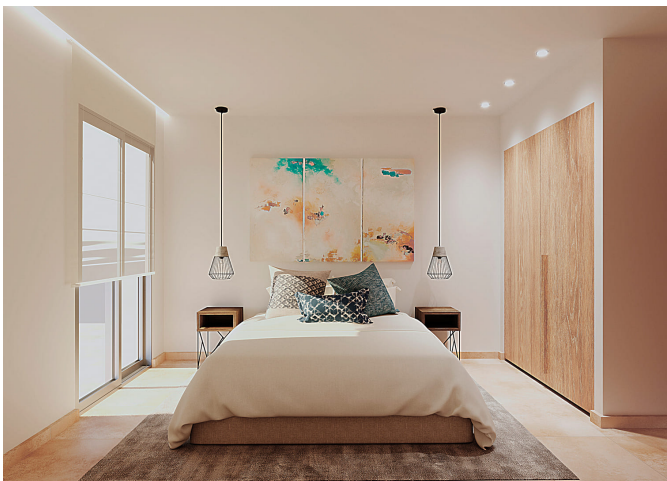
Calle Aníbal 23D bajos - Santa Catalina - 07013 Palma - Tel: +34 971 22 08 68 - info@mallorcaresidencia.com



Mallorcareidencia®
More than a real estate agency

Ref.: MFP140

New project of modern apartments with terrace in El Terreno



PLANTA SOTANO



www.mallorcareidencia.com

Calle Aníbal 23D bajos - Santa Catalina - 07013 Palma - Tel: +34 971 22 08 68 - info@mallorcareidencia.com



Mallorcaresidencia®
More than a real estate agency

